

## SBI SV

Super short block without flange. Side-nipple, dustproof end seal and self-lubricant container end seal as option.

\* S: Bolt size for bottom mounting type of block

All blocks and rails are also available in Raydent treated material:

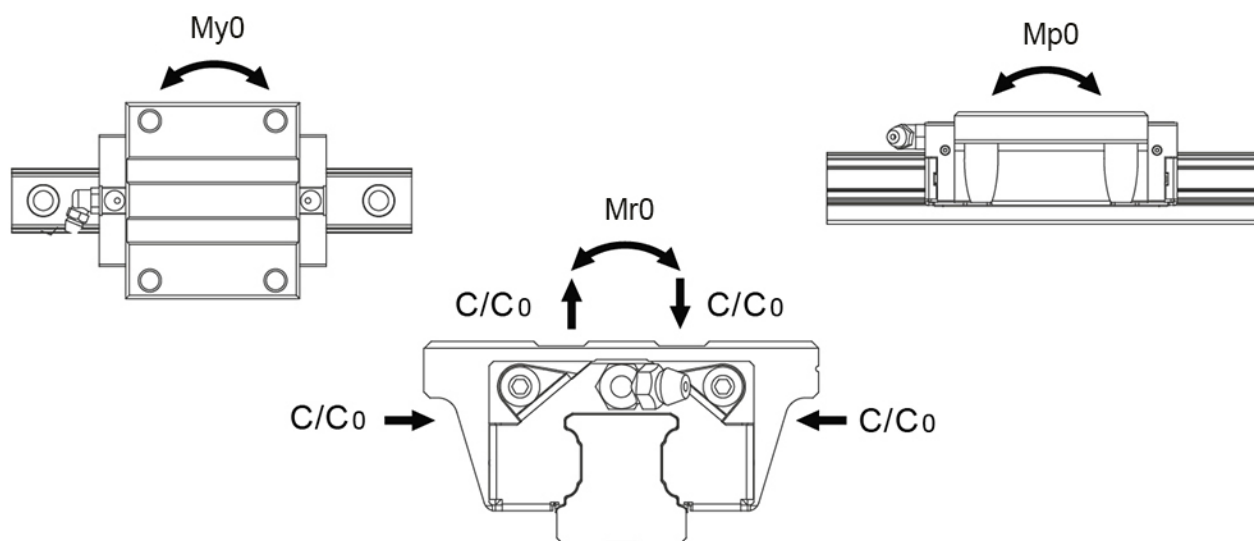
- Corrosion resistant
  - Patented black surface
  - Delivered with steel balls of standard bearing steel.
- Stainless steel balls are available on special request and for a few sizes only. Contact Rollco for more information.

Dimensions in mm.

Lead times in the table below are only indications. Choice of preload and other options will affect lead time. Please contact us for exact delivery time for your request.



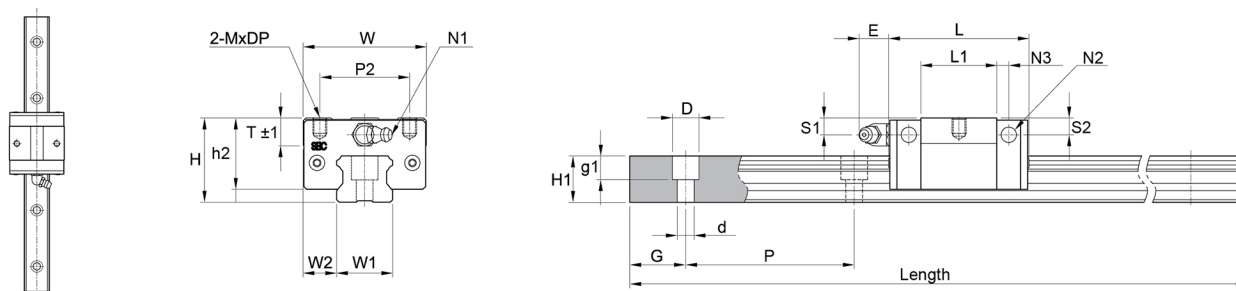
## General Data



Designation	Dynamic Load Capacity C (N)	Static Load Capacity C <sub>0</sub> (N)	Static Moment Mr <sub>0</sub> (Nm)	Static Moment Mp <sub>0</sub> (Nm)	Static Moment My <sub>0</sub> (Nm)
<b>SBI15SV</b>	5800	12800	40	30	30
<b>SBI20SV</b>	9400	20200	120	100	100
<b>SBI25SV</b>	12400	26100	190	170	170

Designation	Dynamic Moment Mr (Nm)	Dynamic Moment Mp (Nm)	Dynamic Moment My (Nm)	Weight Block (g)	Weight Rail (g/m)
<b>SBI15SV</b>	18	14	14	100	1300
<b>SBI20SV</b>	56	47	47	240	2200
<b>SBI25SV</b>	90	81	81	370	3000

## Dimensions



Designation	L	H	W	W1	W2	L1	H1	h2	S1
<b>SBI15SV</b>	39.9	24	34	15	9.5	21.3	13	21	4.5
<b>SBI20SV</b>	49.1	28	44	20	12	27.1	16.5	23.4	4.8
<b>SBI25SV</b>	52.6	33	48	23	12.5	30.6	20	27.5	5.4

Designation	S2	D x d x g1	Hole Pitch (P)	MxDP	N1	N2	N3	P2	E	G
<b>SBI15SV</b>	3.8	7.5 x 4.5 x 5.5	60	M4x4	M4x0.7	Ø 3.5	3.4	26	5.5	20
<b>SBI20SV</b>	4	9.5 x 6 x 8.5	60	M5x5	M6x0.75	Ø 3.5	5	32	12	20
<b>SBI25SV</b>	5.4	11 x 7 x 9	60	M6x6	M6x0.75	Ø 3.5	5	35	12	20

Designation	P	T	Length
<b>SBI15SV</b>	60	6	3000
<b>SBI20SV</b>	60	7.8	4000
<b>SBI25SV</b>	60	9	4000